

88 5522 9501 Kitchen Cart

IMPORTANT NOTE

Carefully remove all the parts from the carton and put them individually on a soft cloth to prevent scratches or other damage occurring to the parts.

We have taken great care in the design of this product and request that you carefully and strictly follow our assembly instructions to ensure a completed product as it was designed.

*Home
Styles*



Part List



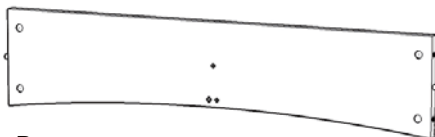
A.
Top
1 pc.



B.
Shelf
2 pcs.

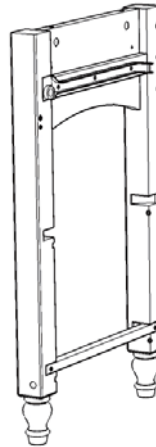


C.
Front Stretcher
1 pc.

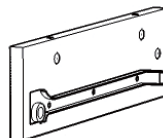
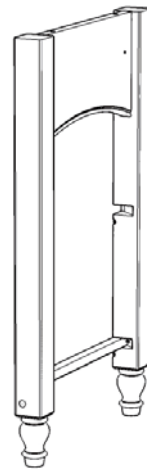


D.
Back Stretcher
1 pc.

G.
Side Frame
1 pc.



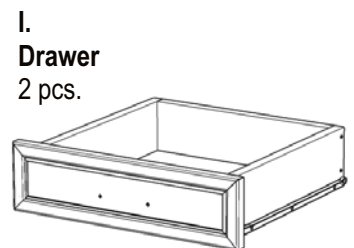
H.
Side Frame
1 pc.



E.
Divider
1 pc.



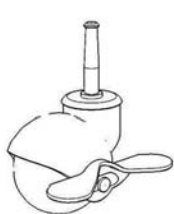
F.
Stretcher
1 pc.



I.
Drawer
2 pcs.

(Please refer to the last page of these instructions for drawer assembly steps.)

Hardware List



Caster
Two with lock and
Two without lock
4 pcs.



Hex Wrench
1 pc.



Cam Lock
15 pcs. (+1 extra)

**M6x50
Head Cap Bolt (long)**
8 pcs. (+1 extra)



Flat Washer
8 pcs. (+1 extra)

**M3.5x25
Wood Screw (long)**
16 pcs. (+1 extra)



**M4x20
Machine Screw**
4 pcs.



Pull Handle
2 pcs.



Small Hex Wrench
1 pc.



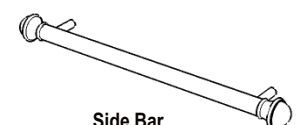
Cam Lock Screw
15 pcs. (+1 extra)

**M6x30
Head Cap Bolt (short)**
6 pcs. (+1 extra)



Spring Washer
8 pcs. (+1 extra)

**M3.5x16
Wood Screw (short)**
12 pcs. (+1 extra)



Side Bar
2 pcs.

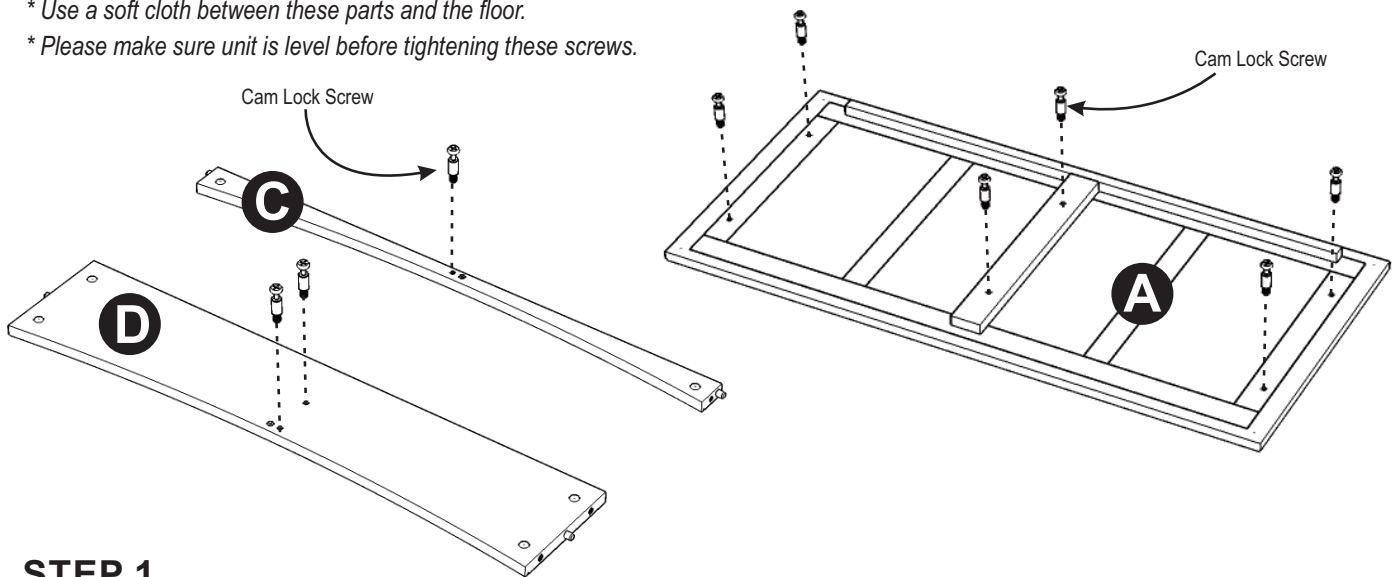
Tools required for assembly : Phillips screwdriver

Tools recommended for assembly : Level

Home Styles Consumer Assistance : www.homestyles-furniture.com,
servicedesk@homestyles-furniture.com, 888-680-7460, 877-831-0319

IMPORTANT

- * Please keep Hex Wrench in a safe place as you may need to tighten up the Head Cap Bolts in the future.
- * Do not tighten up all the bolts until each part is properly assembled.
- * Use a soft cloth between these parts and the floor.
- * Please make sure unit is level before tightening these screws.



STEP 1

Remove the supports from Side Frames (G) and (H).

Insert Cam Lock Screws into pre-drilled holes of Top (A), Front Stretcher (C), Back Stretcher (D), Side Frames (G) and (H). (See Figure 1)

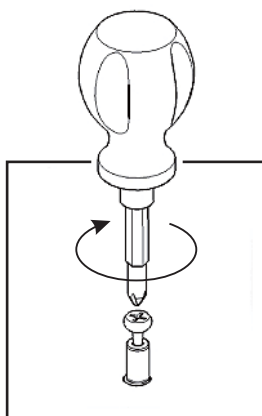


Figure 1

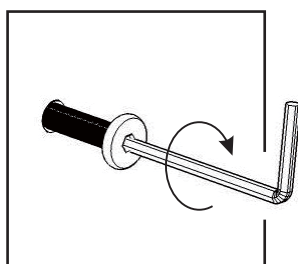
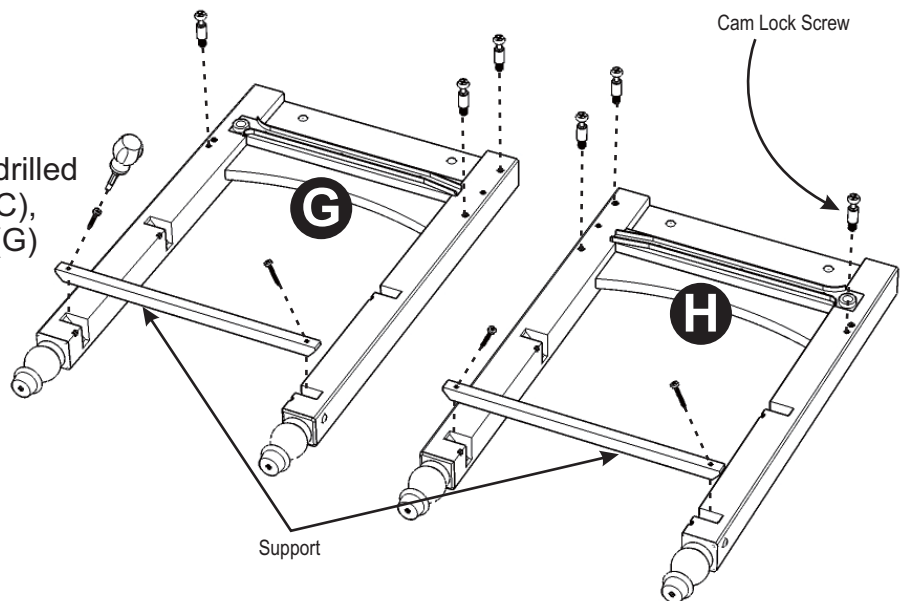
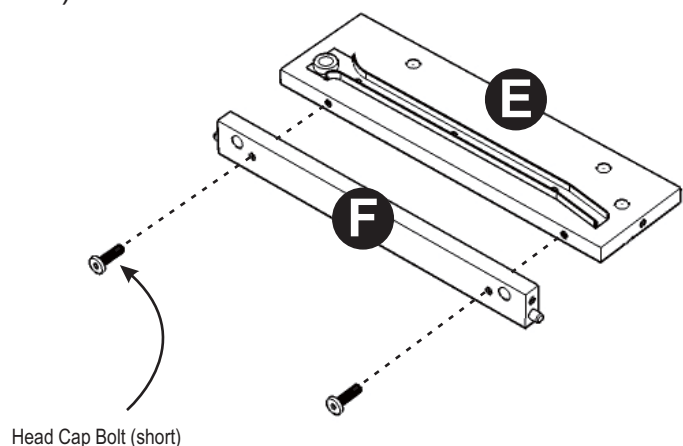


Figure 2



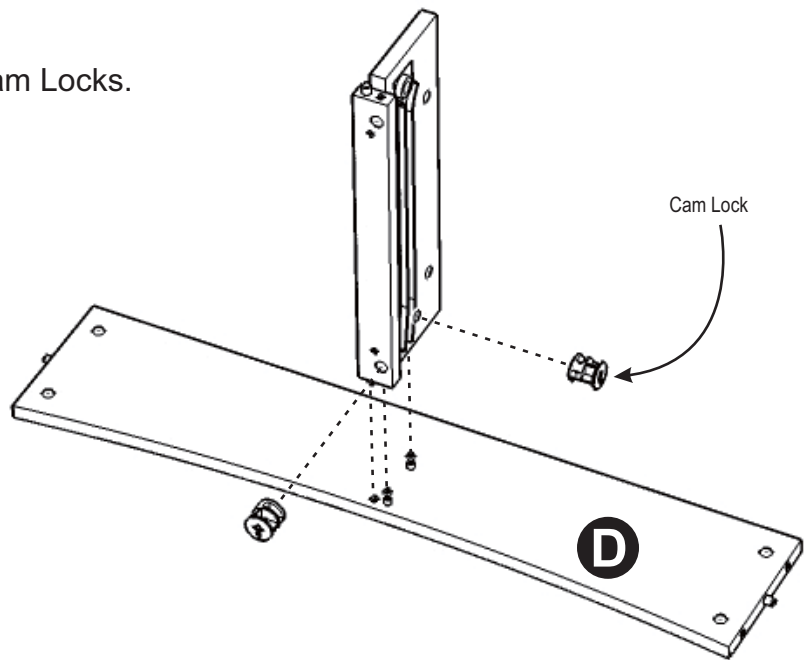
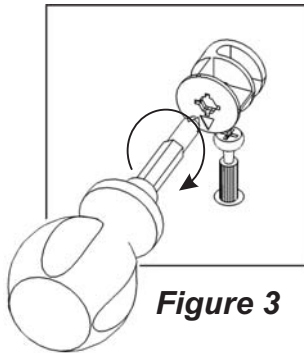
STEP 2

Attach Divider (E) to Stretcher (F) with Head Cap Bolts (short). (See Figure 2)



STEP 3

Attach Back Stretcher (D) to unit with Cam Locks.
(See Figure 3)

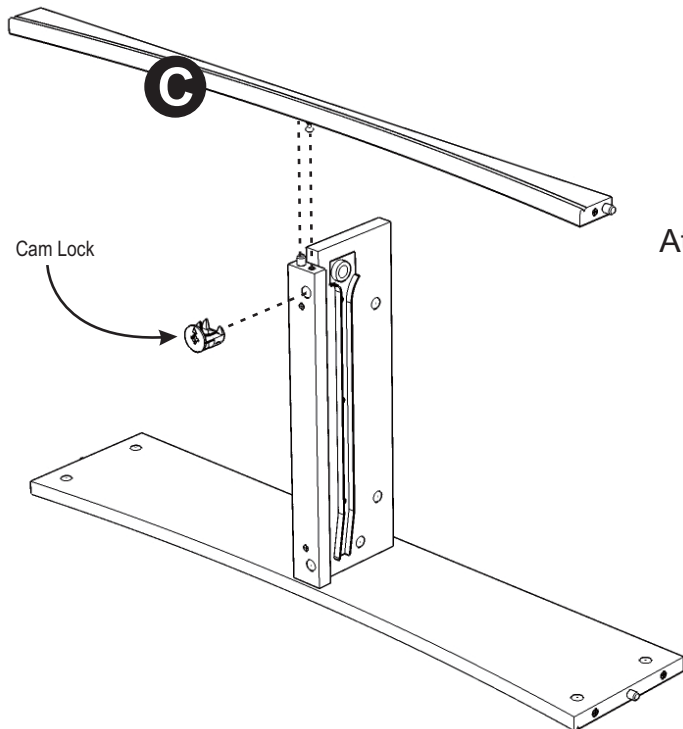


Cam Lock

D

STEP 4

Attach Front Stretcher (C) to unit with Cam Lock.

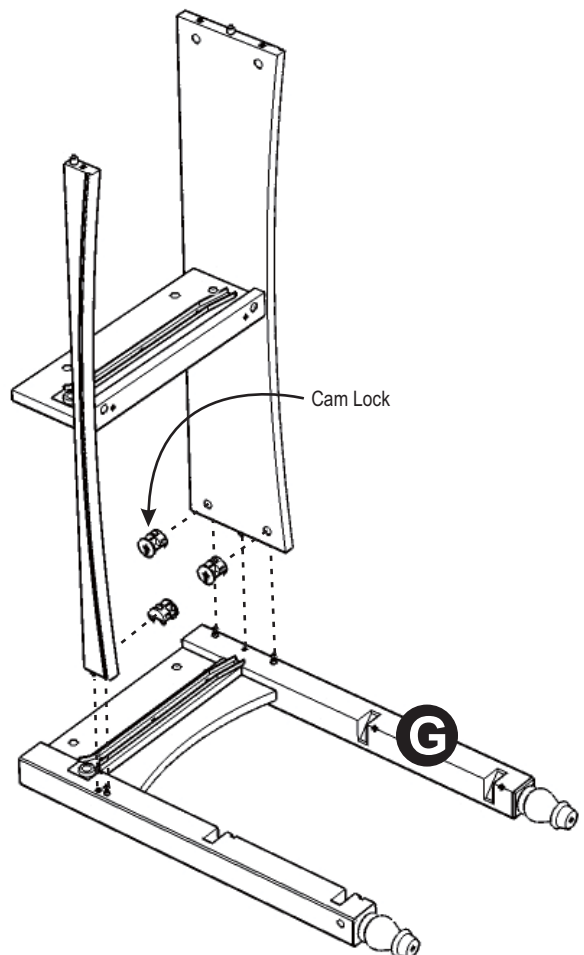


Cam Lock

C

STEP 5

Attach Side Frame (G) to unit with Cam Locks.



Cam Lock

G

STEP 6

Attach Shelves (B) to unit with Head Cap Bolts (long), Spring Washers and Flat Washers.
(See Figure 4)

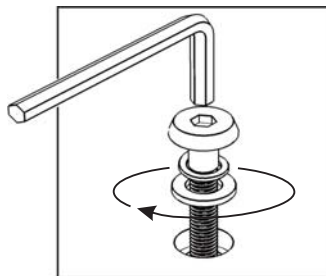
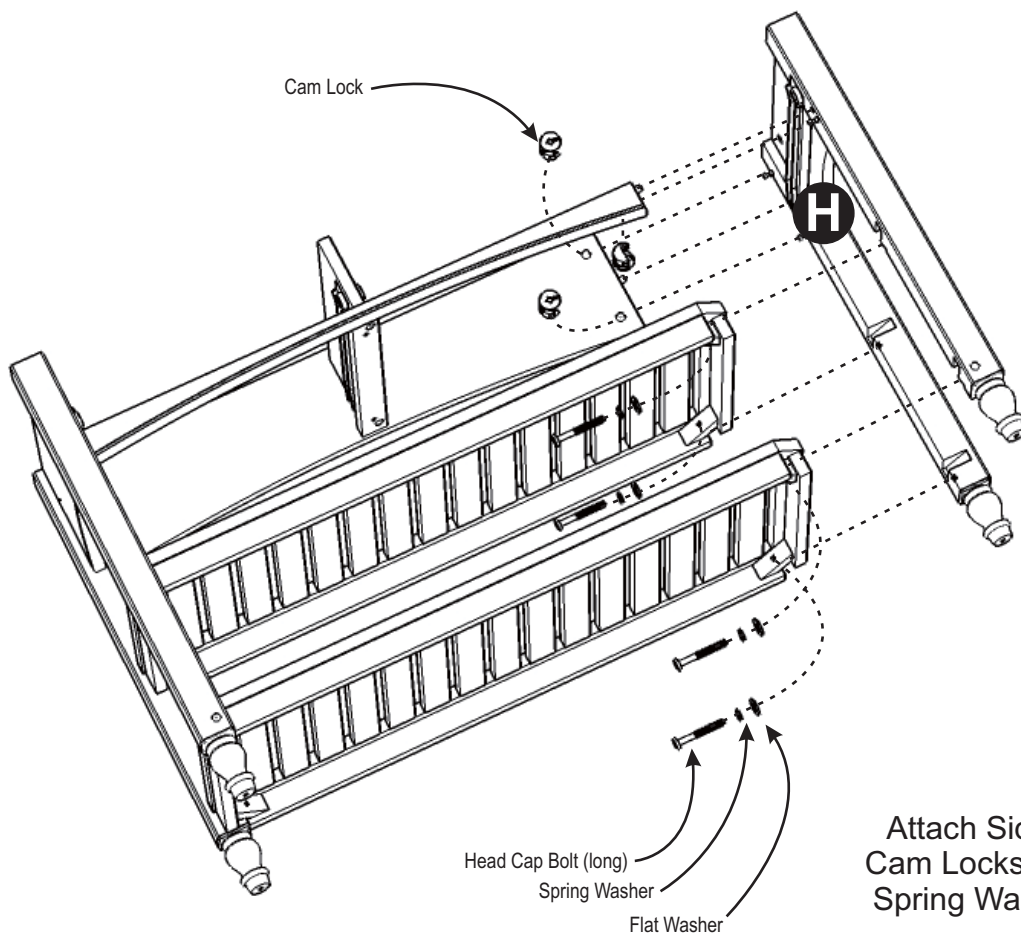
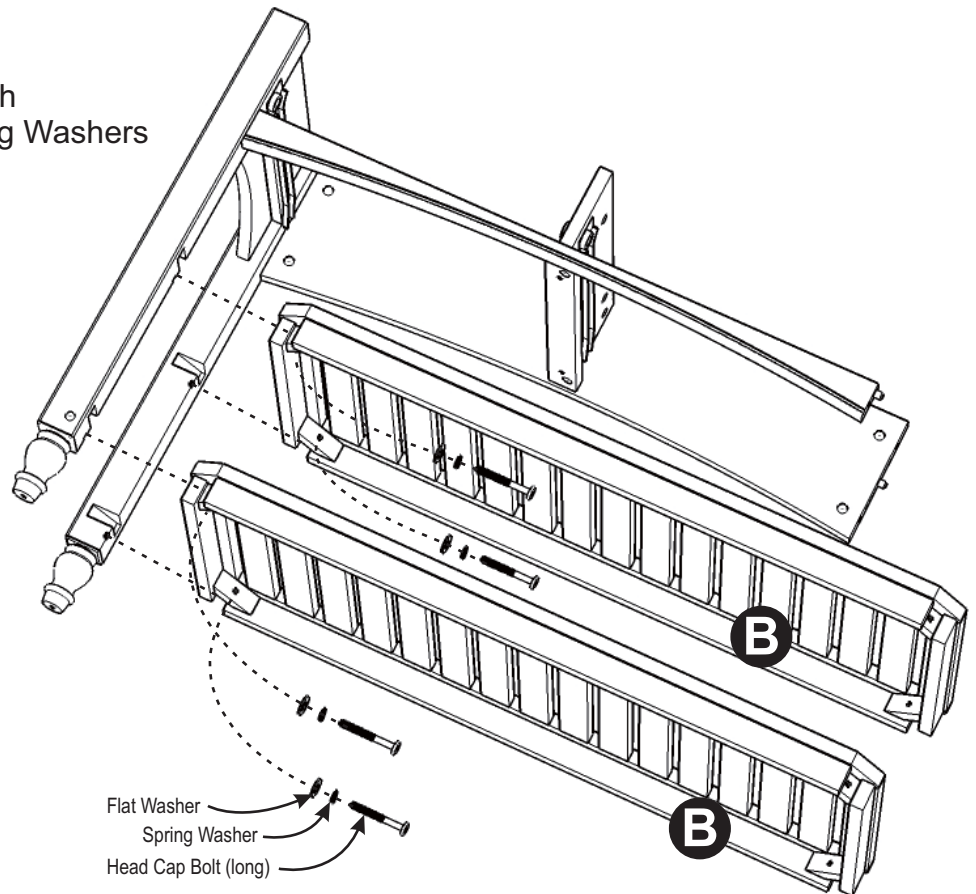


Figure 4

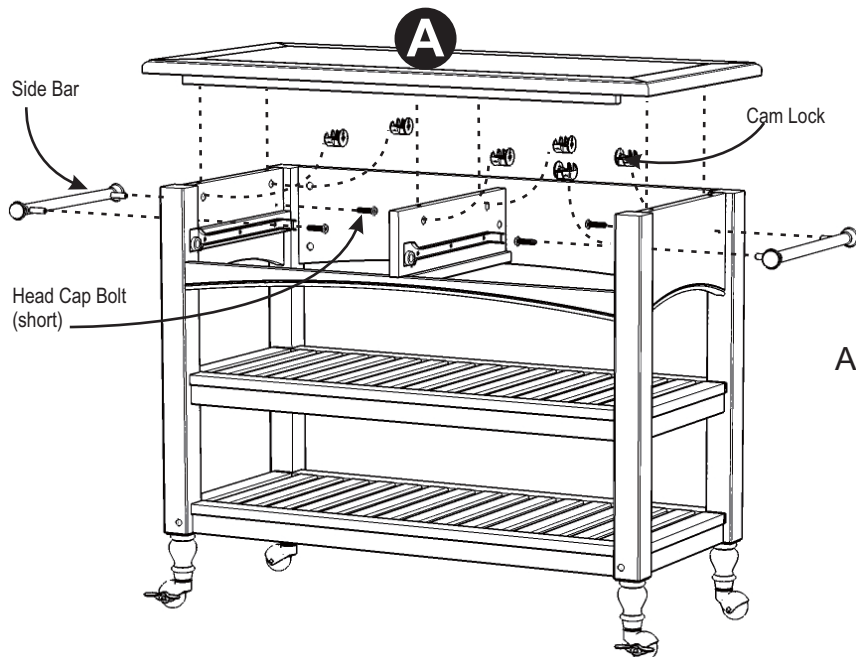
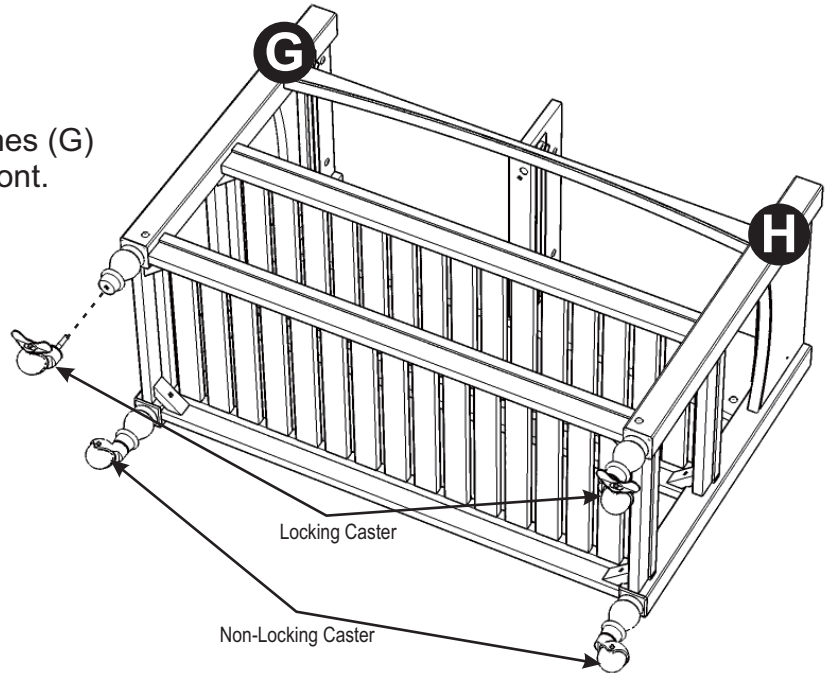


STEP 7

Attach Side Frame (H) to unit with Cam Locks, Head Cap Bolts (long), Spring Washers and Flat Washers.

STEP 8

Attach Casters underneath Side Frames (G) and (H) with Locking Casters to the front.



STEP 9

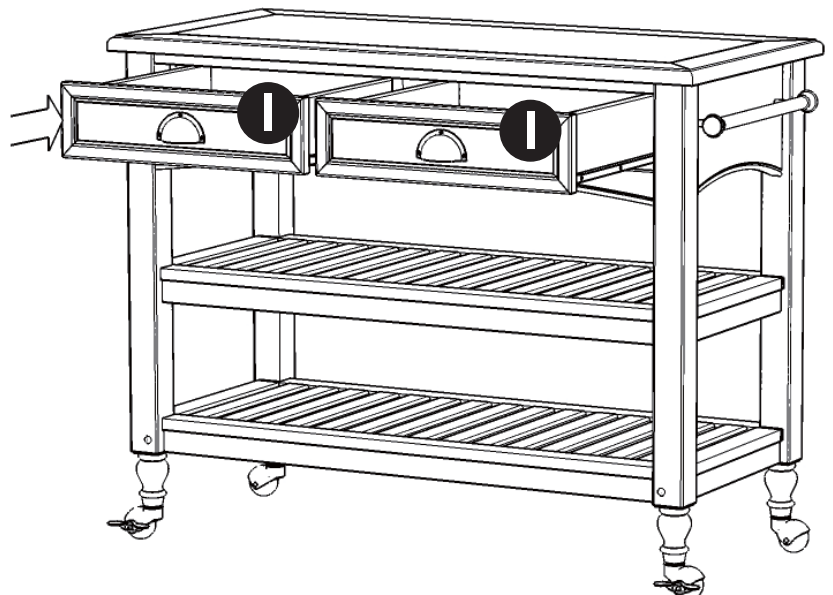
Turn the unit to its' upright position.

Attach Side Bars to unit with Head Cap Bolts (short).

Attach Top (A) to unit with Cam Locks.

STEP 10

Slide Drawers (I) into position.



Drawer (I)

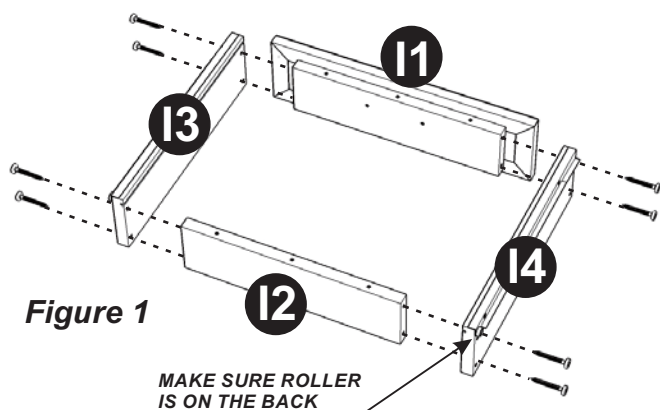
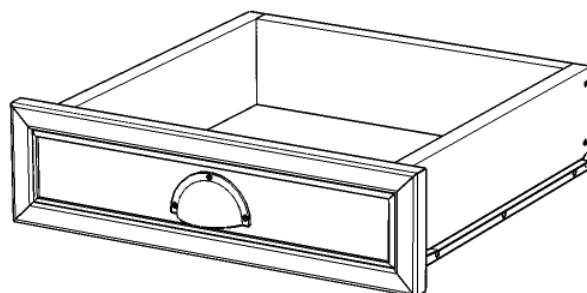


Figure 1

STEP 1

Attach I1, I2 and I3 using a Philips screwdriver and long Wood Screws (4X), tighten halfway.

Attach I1, I2 and I4 using long Wood Screws (4X), tighten halfway. (See Figure 1)

STEP 2

Slide I5 into grooves in I3 and I4. Be sure to push I5 all the way forward so it meet I1. (See Figure 2)

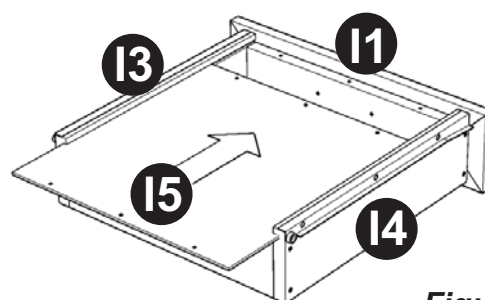


Figure 2

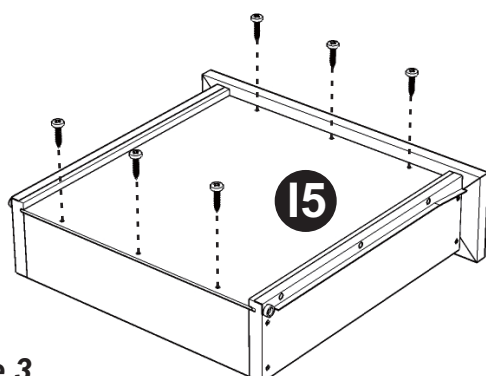


Figure 3

STEP 3

Insert short Wood Screws (6X) into the pre-drilled holes in I5, tighten screws. (See Figure 3)

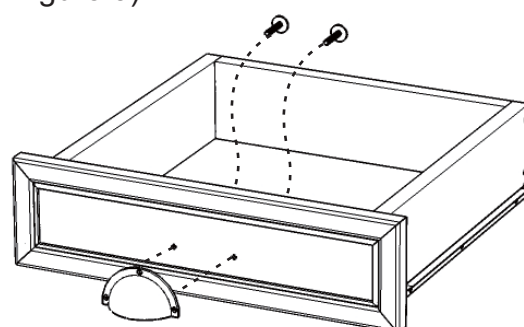


Figure 4

STEP 4

Attach Pull Handle with Machine Screws. (See Figure 4)

Tighten all screws used in drawer assembly.

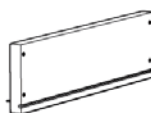
Part List



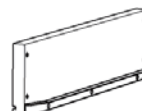
I1.
Front Part
2 pcs.



I2.
Back Part
2 pcs.



I3.
Side Part
2 pcs.



I4.
Side Part
2 pcs.



I5.
Base Part
2 pcs.